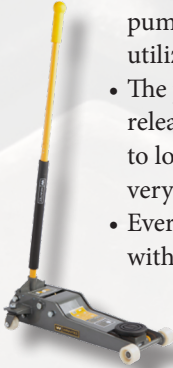


2-1/4 Ton Low Profile Long Chassis Floor Jack

Gaither
PROFESSIONAL EQUIPMENT



- The pump pistons are placed at a 45° angle so a complete pumping stroke will always be utilized
- The professional universal joint release valve makes it possible to lower the jack with a load very precisely and safely
- Every model comes equipped with a handle protector

Part# G420225

\$150⁰⁰

NEW

Heavy Duty Low Speed Buffer

JS PRODUCTS



- 3/8" quick-change chuck makes it easy to swap between adapters
- Ideal for use in tire inner liner cleaning, reaming and roughing
- Variable speed throttle for positive speed control with lever style tease trigger

Part# SLP6510

\$75⁰⁰

AIRCAT
PNEUMATIC TOOLS

1/2" Impact Wrench With 2" Extended Anvil

- Provides 800 ft-lb maximum torque and 1,000 ft-lb of loosening torque
- Hard hitting twin hammer mechanism delivers maximum power
- Grip is ergonomically designed to perfectly fit the hand, providing unmatched comfort for the user
- Cross bolt forward/reverse and power management control



Part# 1431-2 **\$125⁰⁰**

AutoSport
MFG

NEW

3-1/2 Ton Low Profile Floor Jack



- 3.5 Ton rated capacity
- FAST Double pump quick lift design
- Low-profile
- 2 pc knurled handle with foam bumper pad
- Rubber saddle pad

Part# ASM5605

\$250⁰⁰

PREMIER
PERFORMANCE

Tire Mounting Compound 40 lb.



- Made from premium vegetable oils
- Light golden color
- Contains rust inhibitors

8 lb.

Part# 1-216

\$16⁵⁰

25 lb. Part# 1-217

\$37⁵⁰

40 lb. Part# 1-218

\$47⁵⁰

8 Piece Brake Lining Thickness Gauge



Part# 97844 **\$13⁰⁰**

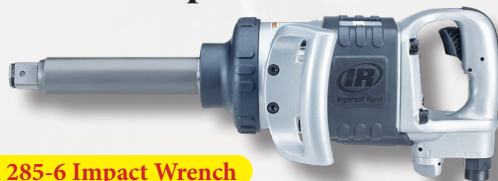
IR Ingersoll Rand.

FREE OFFER With The Purchase Of The 285-6 Impact Wrench!

1" Impact Wrench
6" Ext. Anvil
1,450 ft. lb. Max

\$655⁰⁰

Part# 285-6PROMO



Both Yours FREE With The Purchase Of A 285-6 Impact Wrench



FREE
1" Drive Truck
Service
5 Piece Set

**"While
Supplies
Last"**



FREE
Low Speed Buffer
& Quick Change
Chuck 3,000 RPM

Freight will be added if the 285-6 Impact Wrench promo is ordered alone. No freight charge when purchased with a regular stock order.

Gaither Bead Bazooka Version 2 10 Liter



Part# GBB10L2 **\$445⁵⁰**

LED Headlamp With Adjustable Band 200 Lumens



- 4 bright white, wide angle LEDs create a large flood of light

Part# W2374 **\$8⁵⁰**

Wheel Lock Master Key Set



Works for all White Knight Wheel Locks except for: ET Conical Wheel Locks, Open-End Acorn w/17mm Hex Key and Range Rover Wheel Locks.

Part# KEY-ASST1 **\$78⁵⁰**

8 Mil Nitrile Gloves 50/Box



- Raised diamond texture for best grip
- Excellent oil and grease resistance
- Great cut and puncture resistance
- Ambidextrous
- 100% latex free

Large Part# DNTOR850L
X-Large Part# DNTOR850XL

\$10⁰⁰
EACH

Premium Push Button Coupler TruFlate 1/4" x 1/4" NPT Male



- 3/8" FNPT air flow
- Maximum of 36 SCFM
- Push once to stop airflow, twice to release plug

Part# 2-511PB **\$18⁰⁰**

Premium Push Button Coupler M Style 1/4" x 1/4" NPT Female



- Maximum inlet pressure of 300 pounds per square inch
- Air flow of 36 standard cubic feet per minute

Part# S-99705 **\$22⁰⁰**

Premium Push Button Coupler TruFlate 1/4" x 1/4" NPT Female



- Simply push once to stop airflow, twice to release plug
- Air flow of 36 SCFM
- Maximum pressure of 300 PSI

Part# 2-510PB **\$22⁵⁰**



Lug Nut Master Kit

- Top 30 lug nut part#'s
- Includes 1,165 lug nuts
- All metal storage system
- Thread gauge #TG-6000
- 1-piece design



Part# LUGMASTER
\$1,250⁰⁰



1/2" Drive Non-Marring Socket Adapter Set 17mm, 19mm, 21mm



Part# WK-83-321 **\$40⁵⁰**

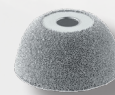
Twist Socket Set 4 Piece 17mm, 19mm, 21mm, 22mm



Part# WK-8140-5 **\$44⁵⁰**



Contour Wheels



Flared Contour Wheel 1-3/4" 170SSG
Part# RH-100 **Sale \$25.50**

Flared Contour Wheel 2-1/2" 170SSG
Part# RH-106 **Sale \$30.50**

Flared Contour Wheel 2-1/2" 230SSG
Part# RH-108 **Sale \$31.00**

Flared Contour Wheel 2-1/2" 390SSG
Part# RH-110 **Sale \$24.00**

Flared Contour Wheel 3" 170SSG
Part# RH-112 **Sale \$45.00**

Flared Contour Wheel 3" 230SSG
Part# RH-114 **Sale \$45.00**

Flared Contour Wheel 3" 390SSG
Part# RH-116 **Sale \$45.50**

Flared Contour Wheel 3-1/2" 170SSG 3/8" Arbor Hole
Part# RH-118 **Sale \$53.50**

Sale Pricing July 1ST Thru September 30TH, 2026

10601 Lackman Road • Lenexa, KS 66219

(913) 888-5466

Also visit www.techtiresupply.com